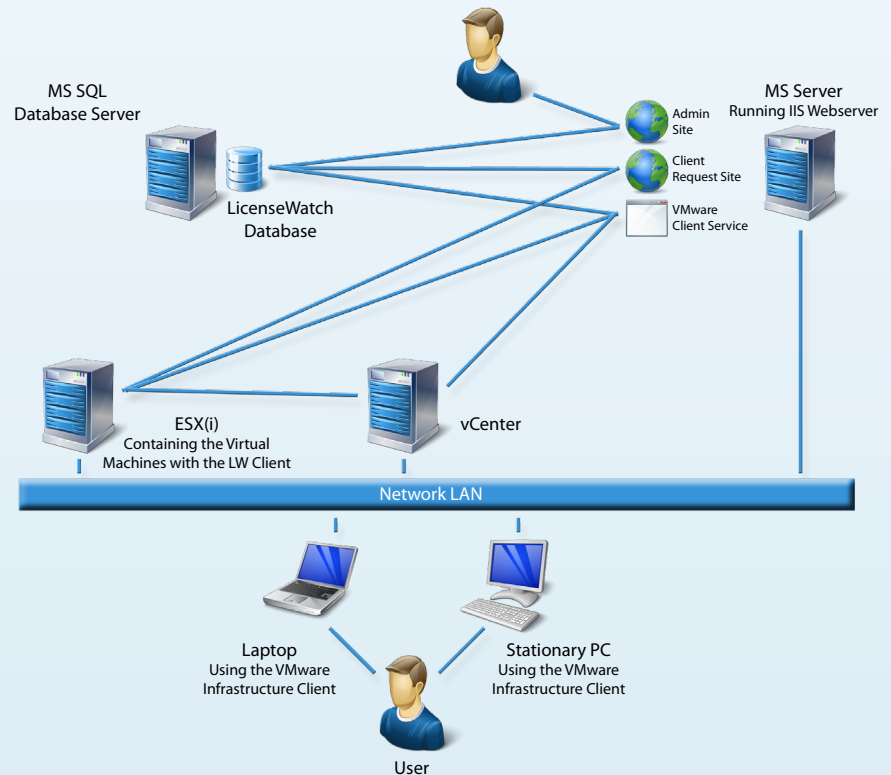


LicenseWatch Connector for VMware

vmware®



ABOUT LICENSEWATCH

LicenseWatch provides you with cost effective control and compliance.

KNOW WHAT YOU HAVE

Our leading technology quickly tells you what software you have installed, how it is used, and what licenses you have to support this.

QUICK TO IMPLEMENT

With LicenseWatch there are no lengthy and costly deployment projects. Typically installed and configured within one working day, you can quickly start gathering your software information.

EXTENSIVE REPORTING

The reporting capabilities in LicenseWatch provides with the necessary information about your assets with up to date accuracy. With over 100 pre-defined reports and a Report Wizard, well informed decisions can now be made. All reports can be exported to Excel, Word or PDF format.

The above illustration shows how License-Watch's (LW) VMware service interacts with VMware and the rest of LW. The service can be configured to communicate both with ESX or ESXi directly, or through a vCenter (Virtual Center). The LW VMware service is non intrusive and does not write any data to VMware. It strictly reads data.

The user interface is straight forward: The administrator adds either of the before mentioned servers (ESX(i) / vCenter) as a root host (much like it's seen in the VMware Infrastructure Client), and the LW VMware service

takes care of gathering information about the VMware servers and which virtual machines are running where.

The LW Client is deployed on the virtual machines the same way as with a normal user PC / laptop. LW then takes care of linking the obtained data together wherever it is relevant. The LW VMware service can be decoupled from the server running the LW website, as long as the service has access to the LW database (DSN) and direct connection with either a vCenter controlling the ESX(i), or directly to the ESX(i).

LicenseWatch